

Human GFR alpha 1 Protein

Cat. No. GFR-HM11A



Description

| | |
|------------------|--|
| Source | Recombinant Human GFR alpha 1 Protein is expressed from HEK293 with His tag at the C-Terminus. |
| | It contains Asp25-Ser424. |
| Accession | NP_665736.1 |
| Molecular Weight | The protein has a predicted MW of 45.8 kDa. Due to glycosylation, the protein migrates to 50-70 kDa based on Bis-Tris PAGE result. |
| Endotoxin | Less than 1 EU per µg by the LAL method. |
| Purity | > 95% as determined by Bis-Tris PAGE |
| | > 95% as determined by HPLC |

Formulation and Storage

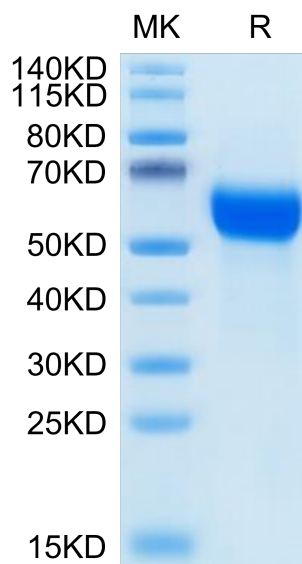
| | |
|----------------|---|
| Formulation | Lyophilized from 0.22µm filtered solution in PBS (pH 7.4). Normally 8% trehalose is added as protectant before lyophilization. |
| Reconstitution | Dissolve the lyophilized protein in distilled water. Please refer to the Certificate of Analysis for detailed instructions. |
| Storage | -20 to -80°C for 12 months as supplied from date of receipt. -80°C for 3 months after reconstitution. Recommend to aliquot the protein into smaller quantities for optimal storage. Please minimize freeze-thaw cycles. |

Background

Neuroblastomas often undergo spontaneous differentiation and/or regression in vivo, which is at least partly regulated by the signals through neurotrophins and their receptors. Recently, glial cell line-derived neurotrophic factor (GDNF) and a second family member, neurturin (NTN), have been found to mediate their signals by binding to a heterotetrameric complex of c-Ret tyrosine kinase receptors and glycosylphosphatidylinositol-linked proteins, GFR alpha-1 (GDNFR-alpha) or GFR alpha-2 (TrnR2/GDNFR-beta/NTNR-alpha/RETL2).

Assay Data

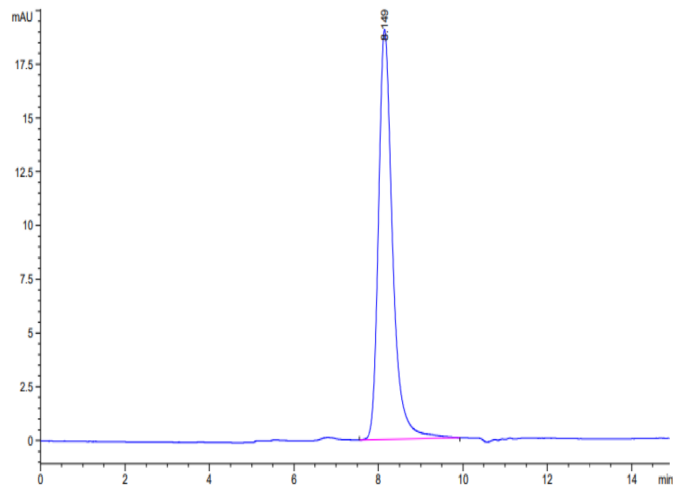
Bis-Tris PAGE



Human GFR alpha 1 on Bis-Tris PAGE under reduced condition. The purity is greater than 95%.

SEC-HPLC

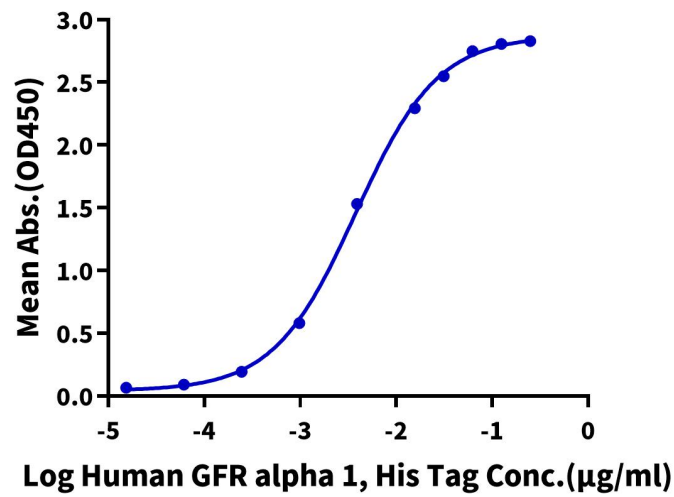
Assay Data



The purity of Human GFR alpha 1 is greater than 95% as determined by SEC-HPLC.

ELISA Data

Human GFR alpha 1, His Tag ELISA
0.1µg Human GDNF, No Tag Per Well



Immobilized Human GDNF, No Tag at 1 µg/ml (100µl/well) on the plate. Dose response curve for Human GFR alpha 1, His Tag with the EC50 of 3.8ng/ml determined by ELISA.